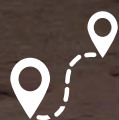




ARCHES NATIONAL PARK

TRIP PLANNER



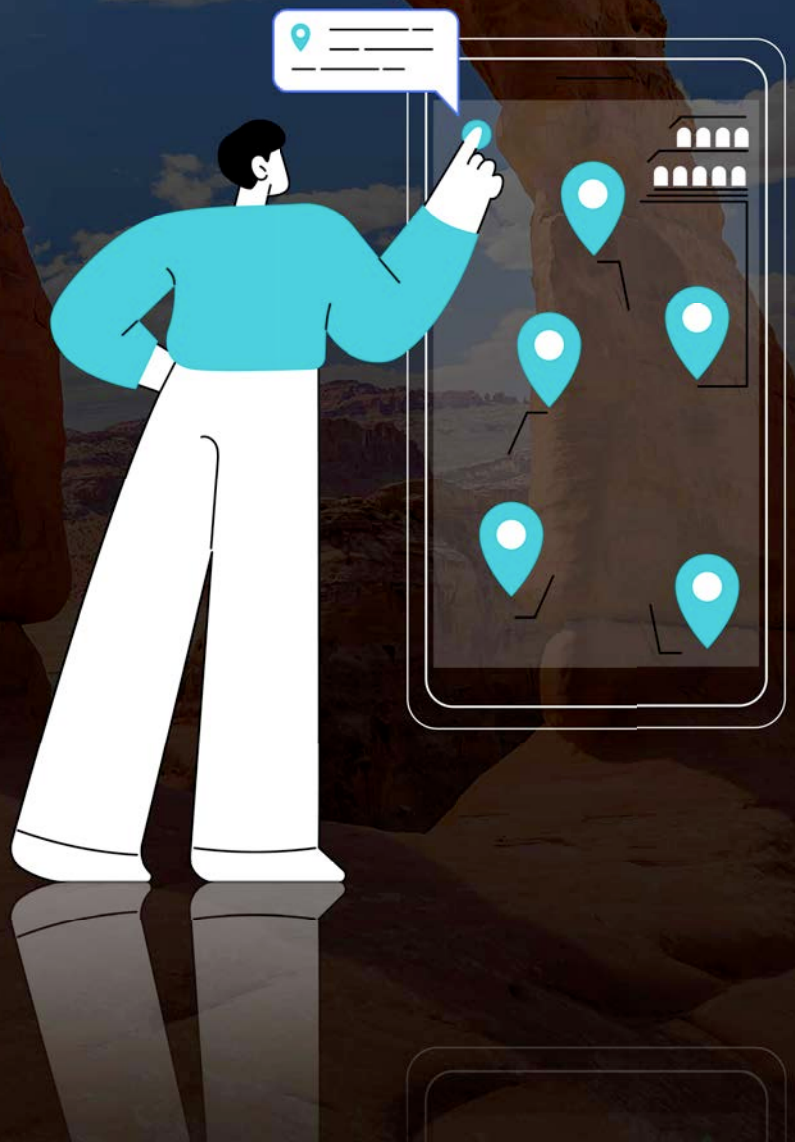
28+ Miles



2-3 Hours

TRIP PLANNER

- Must-See Points
- Best Hikes (Quick, Moderate, Long)
- Itineraries (One Day, Two Days)
- Where to Stay
- Know Before You Go
- Packing List



MUST-SEE POINTS

Devil's Garden



Dedicated
Tour



Delicate Arch

Sand Dune Arch



Double Arch

Balanced Rock



Park Avenue
Viewpoint



START

ARCHES
ENTRANCE RD

BEST HIKES



DOUBLE
ARCH



WINDOWS
LOOP TRAIL



BALANCED
ROCK



PARK
AVENUE



DELICATE
ARCH
(Dedicated Tour)



DEVIL'S
GARDEN TRAIL



ITINERARIES

You can enjoy the park at your own pace with the self-guided audio tour from Action Tour Guide.

This flexible tour can be completed in one day or spread over multiple days. Since it is valid for one year and offers unlimited usage, you don't have to worry about seeing everything in one visit.

ONE-DAY ITINERARY:

- Start your day early by entering the park through the main entrance. Make sure to download the Action Tour Guide app and tour beforehand, as there may be limited signal within the park.
- Stop at the Must-See points highlighted on the tour (marked in the tour as "Must-See"):
 - Delicate Arch
 - Park Ave Viewpoint
 - Balanced Rock
 - Double Arch
 - Sand Dune Arch
 - Devil's Garden
- After exploring these must-see points, proceed to embark on the Delicate Arch Walking Tour. This self-guided tour will lead you to discover the fascinating history, geological features, and cultural significance of Delicate Arch. You can check out our tour at www.ActionTourGuide.com.
- You have plenty of time to experience some of the quick hikes. You can also choose one of the moderate hikes. See Hikes section.
- Enjoy a packed lunch at one of the designated picnic areas within the park, such as the Windows Picnic Area or the Devil's Garden Picnic Area.
- End your day by watching the sunset from a scenic viewpoint, such as the Delicate Arch Viewpoint or the Panorama Point, to witness the breathtaking colours painting the landscape as the sun dips below the horizon.

TWO-DAY ITINERARY:

- **Day 1:** Follow the one-day itinerary mentioned above. Make sure to download the Action Tour Guide app and tour beforehand, as there may be limited signal within the park.
- **Day 1 Night:** Return to the park for stargazing at one of the recommended spots, such as:
 - Balanced Rock
 - Park Avenue
 - The Windows
 - Delicate Arch Viewpoint & Parking
- Also, take advantage of your time in the area to visit nearby Canyonlands National Park, which offers stunning landscapes and unique geological formations for an unforgettable experience. You can find our self-guided tour at www.ActionTourGuide.com.
- **Day 2:** Begin your day with preparations: Purchase and download the [Canyonlands National Park](#) tour beforehand as connectivity can be limited in the park. With your pre-purchased tour and app already downloaded, you're all set to explore the majestic landscapes that await.
- Once you have your tour ready, enter the park early, specifically aiming for the Island in the Sky district which is the most accessible part of Canyonlands and offers breathtaking panoramic views.
- Stop at the Must-See points highlighted on the tour (marked in the tour as "Must-See"):
 - Shafer Canyon Overlook & The Neck
 - Mesa Arch Trailhead
 - Aztec Butte Trailhead
 - Murphy Point
 - Grand View Point
- Experience some of the hikes and enjoy a packed lunch at one of the designated picnic areas within the park like Green River Overlook Picnic Area or the Willow Flat Picnic Area.
- End your day by watching the sunset from a scenic viewpoint, such as Grand View Point or Mesa Arch, to witness the breathtaking colours painting the vast expanse of Canyonlands National Park as the sun dips below the horizon.
- Also, don't miss the opportunity to explore the majestic La Sal Mountains with our self-guided tour available at www.ActionTourGuide.com.

WHERE TO STAY



Arches National Park

MOAB

Situated near the park's main entrance, Moab offers a wide range of accommodations, vacation rentals and outdoor gear shops for exploring the park.

SPANISH VALLEY

Located just south of Moab, Spanish Valley offers a quieter alternative for accommodations.

KNOW BEFORE YOU GO



ENTRANCE FEES: Requires a park pass, which is not included in the self-guided tour. [Review pass options.](#)



RESERVATION: Requires a visitation reservation from April through October, which is not included in the self-guided tour. [Reserve here before your trip.](#) Click [here](#) for other reservations.



OPERATING HOURS: Open 24 Hours. Year-Round. Partial closures or limited accessibility in winter due to snow. [Learn more before you go.](#)



ROAD CLOSURES: Unexpected weather or construction incidents can affect roads. While the tour is updated frequently to include detours, it cannot reflect up-to-the-minute updates. [Check before you leave.](#)



PARK RULES AND SAFETY: Stay on designated trails, camp in designated areas, and respect wildlife and natural resources by following the [Camping Rules and Regulations](#). Follow all NPS [Laws and Policies](#). Be familiar with the park's [Safety Guidelines](#).

PACKING LIST



Binoculars



Extra Layers



First Aid Kit



Snacks



Portable Charger



Phone Holder



Gas



Bear Spray



Sunscreen



Water



Hiking Boots



Camera