



BIG BEND NATIONAL PARK

TRIP PLANNER



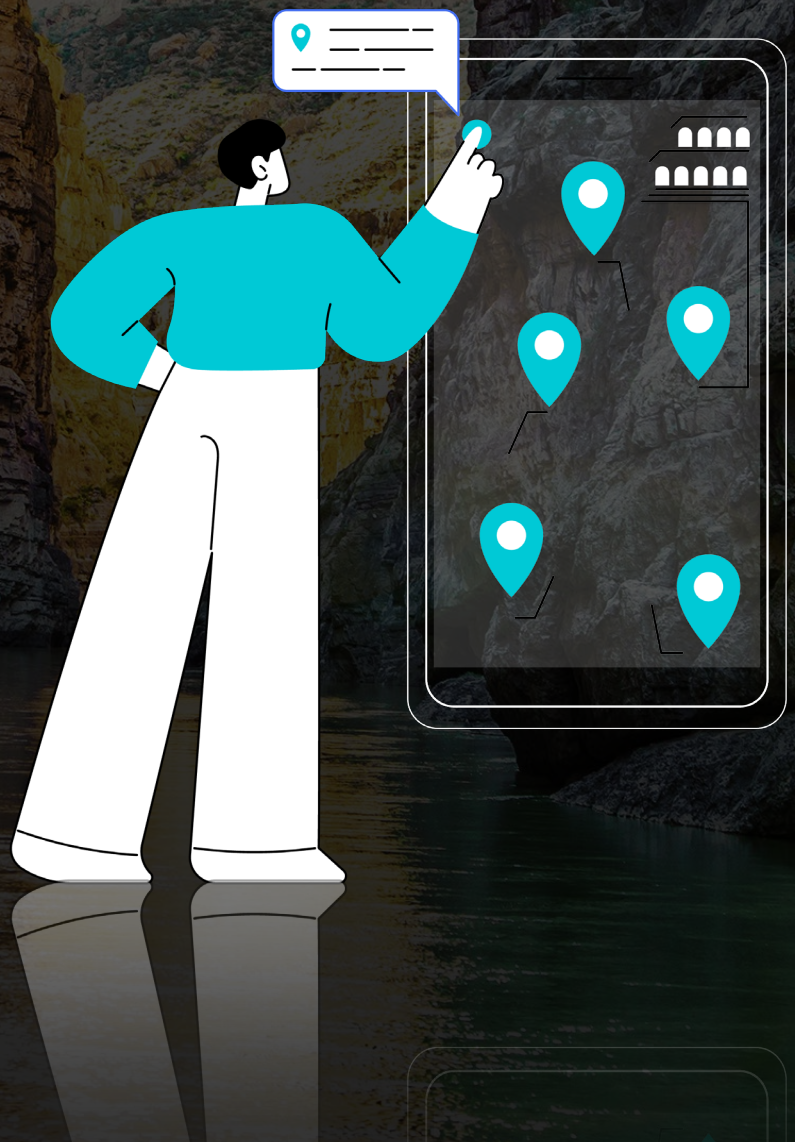
72 Miles



2-3 Hours

TRIP PLANNER

- Must-See Points
- Best Hikes (Quick, Moderate, Long)
- Itineraries (One Day, Two Days)
- Where to Stay
- Know Before You Go
- Packing List



MUST-SEE POINTS

BIG BEND NATIONAL PARK SIGN (SOUTHBOUND)

START

Fossil
Discovery
Exhibit



Sam Nail Ranch



Dugout Wells



Tuff Canyon Overlook



Santa Elena Canyon
River Access



Rio Grande Overlook



Sotol Vista Overlook



Mule Ears Viewpoint



Hot Springs Canyon Trail



Santa Elena
Canyon Overlook

BEST HIKES



SANTA ELENA
CANYON TRAIL



Easy



1.6 Miles



2 Hours



BIG BEND HOT
SPRINGS TRAIL



Easy



1.2 Miles



40 Mins



ERNST TINAJA
TRAIL



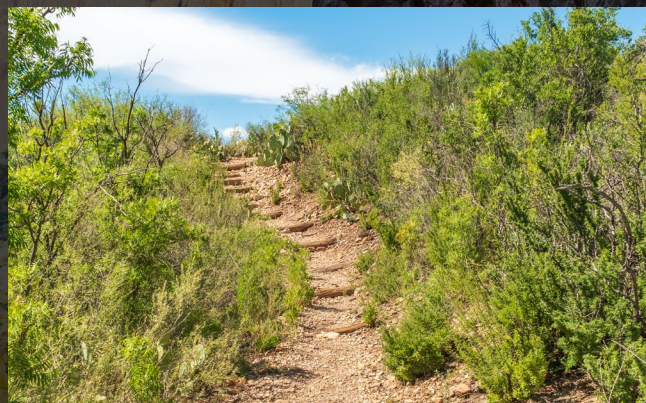
Easy



1 Mile



30 Mins



SAM NAIL
RANCH TRAIL



Moderate



0.3 Miles



10 Mins



UPPER BURRO
MESA POUR-OFF
TRAIL



Moderate



3.5 Miles



2 Hours



MULE EAR
SPRING



Moderate



4 Miles



2 Hours

ITINERARY

You can enjoy the park at your own pace with the self-guided audio tour from Action Tour Guide.

This flexible tour can be completed in one day or spread over multiple days. Since it is valid for one year and offers unlimited usage, you don't have to worry about seeing everything in one visit.

ONE-DAY ITINERARY:

- Start your day early by entering Big Bend National Park through one of its main entrances. Make sure to download the Action Tour Guide app and tour beforehand, as there is little to no signal within the park.
- Drive along the famous Ross Maxwell Scenic Drive and stop at the Must-See points highlighted on the tour (marked in the tour as "Must-See"):
 - Fossil Discovery Exhibit
 - Dugout Wells
 - Rio Grande Overlook
 - Hot Springs Canyon Trail
 - Sam Nail Ranch
 - Sotol Vista Overlook
 - Mule Ears Viewpoint
 - Tuff Canyon Overlook
 - Santa Elena Canyon Overlook
 - Santa Elena Canyon River Access
- Enjoy a few hikes to experience Big Bend's wilderness as much as possible and to fully immerse yourself in Big Bend's diverse landscapes. (See Hikes Section)
- Take a break for lunch at designated picnic areas, such as Rio Grande Village Picnic Area or Panther Junction Picnic Area, while enjoying the surrounding views.
- As the day comes to an end, head to a scenic overlook, such as the Sotol Vista Overlook or the Santa Elena Canyon Overlook, to marvel at the breathtaking sunset over Big Bend's rugged terrain.

WHERE TO STAY

BIG BEND NATIONAL PARK

RIO GRANDE WILD & SCENIC RIVER
A U.S. BIOSPHERE RESERVE



MARATHON

Approximately 40 miles (45 minutes) north of the park's Persimmon Gap Entrance, Marathon is a charming small town. It offers unique lodging options like the famous Gage Hotel and a quieter atmosphere for travellers.

STUDY BUTTE

Approximately 10 minutes south of Study Butte, it offers visitors swift access to its stunning landscapes and outdoor activities, making Study Butte a practical gateway for explorations of the area.

KNOW BEFORE YOU GO



ENTRANCE FEES: Requires a park pass, which is not included in the self-guided tour. No cash and no refunds due to inclement weather.

[Review pass options.](#)



RESERVATION: Requires a reservation for camping, lodging or other activities which is not included in the self-guided tour.

[Reserve here before your trip.](#)



OPERATING HOURS: Open 24 Hours year-round. Be careful in summer due to extreme heat. [Learn more before you go.](#)



ROAD CLOSURES: Unexpected weather or construction incidents can affect roads. While the tour is updated frequently to include detours, it cannot reflect up-to-the-minute updates. [Check before you leave.](#)



PARK RULES AND SAFETY: Stay on designated trails, camp in designated areas, and respect wildlife and natural resources by following the [Camping Rules](#) and [Regulations](#). Follow all NPS [Laws and Policies](#). Be familiar with the park's [Safety Guidelines](#).

PACKING LIST



Binoculars



Hat & Glasses



Water



Snacks



Portable Charger



Phone Holder



Gas



First Aid Kit



Insect Repellent



Sunscreen



Hiking Boots



Bear Spray