



DEATH VALLEY

TRIP PLANNER



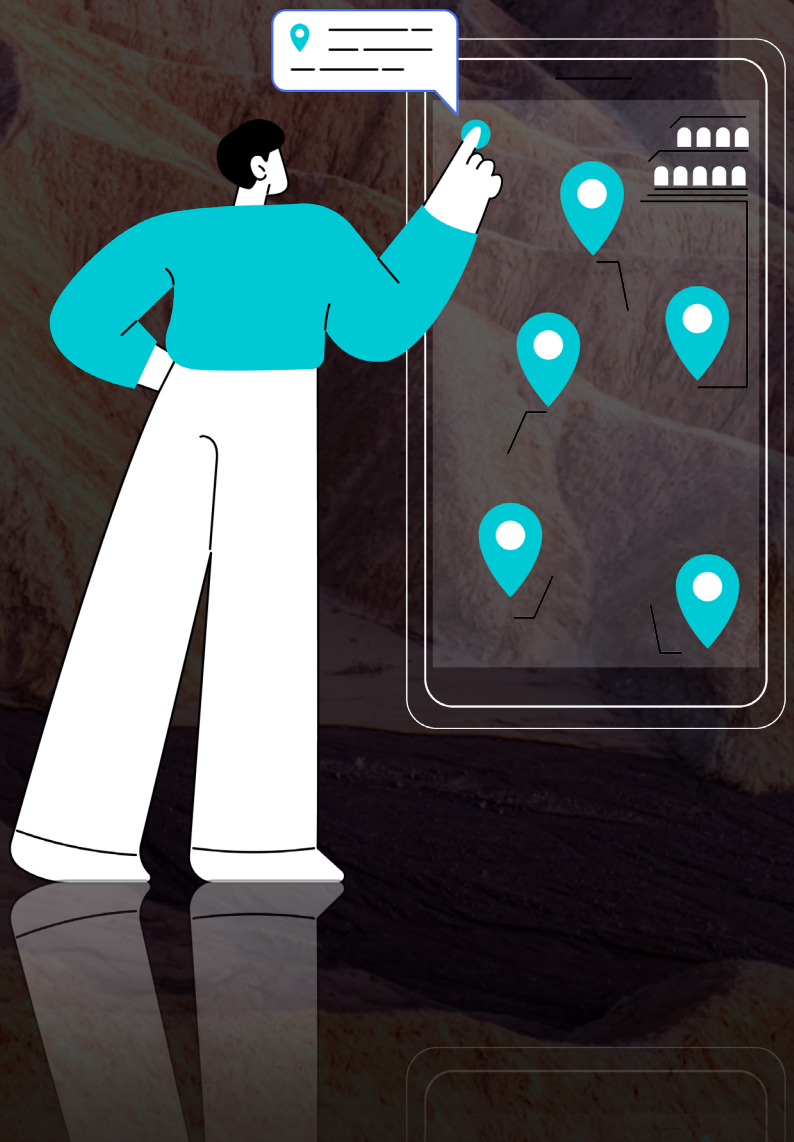
100+ Miles



2-3 Hours

TRIP PLANNER

- Where to Enter
- Must-See Points
- Best Hikes (Quick, Moderate, Long)
- Itineraries (One Day, Two Days)
- Where to Stay
- Know Before You Go
- Packing List



WHERE TO ENTER



Your self-guided tour supports all four entrances! Each entrance is available as a separate tour version.

Don't worry — all the versions have all the same stories, just tailored to each entrance. One is not better than any other! Be sure not to miss the bonus tour of Titus Canyon!

Be sure to have all of the versions downloaded ahead of time because there's no signal once in the park.

MUST-SEE POINTS



BEST HIKES



ZABRISKIE
POINT LOOP



Easy



0.4 Mile



15 Mins



MESQUITE FLAT
SAND DUNES



Easy



2.3 Mile



1 Hour



TITUS CANYON
TRAIL



Easy



25.4 Miles



1 Hour



DANTE'S
VIEW TRAIL



Moderate



1 Mile



45 Mins



GOLDEN
CANYON AND
CATHEDRAL
TRAILHEAD



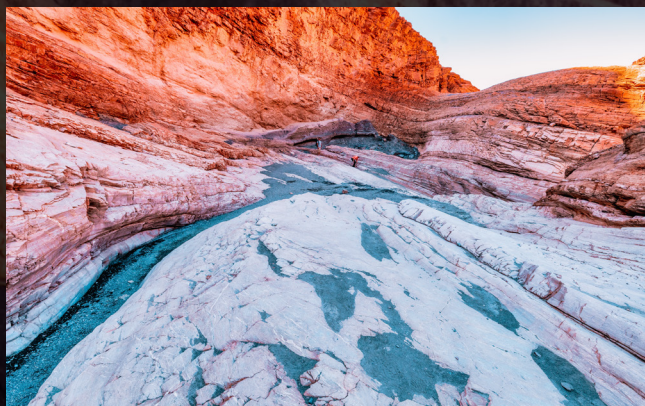
Moderate



2.9 Miles



1-2 Hours



MOSAIC
CANYON



Moderate



3.5 Miles



2 Hours

ITINERARIES

You can enjoy the park at your own pace with the self-guided audio tour from Action Tour Guide.

This flexible tour can be completed in one day or spread over multiple days. Since it is valid for one year and offers unlimited usage, you don't have to worry about seeing everything in one visit.

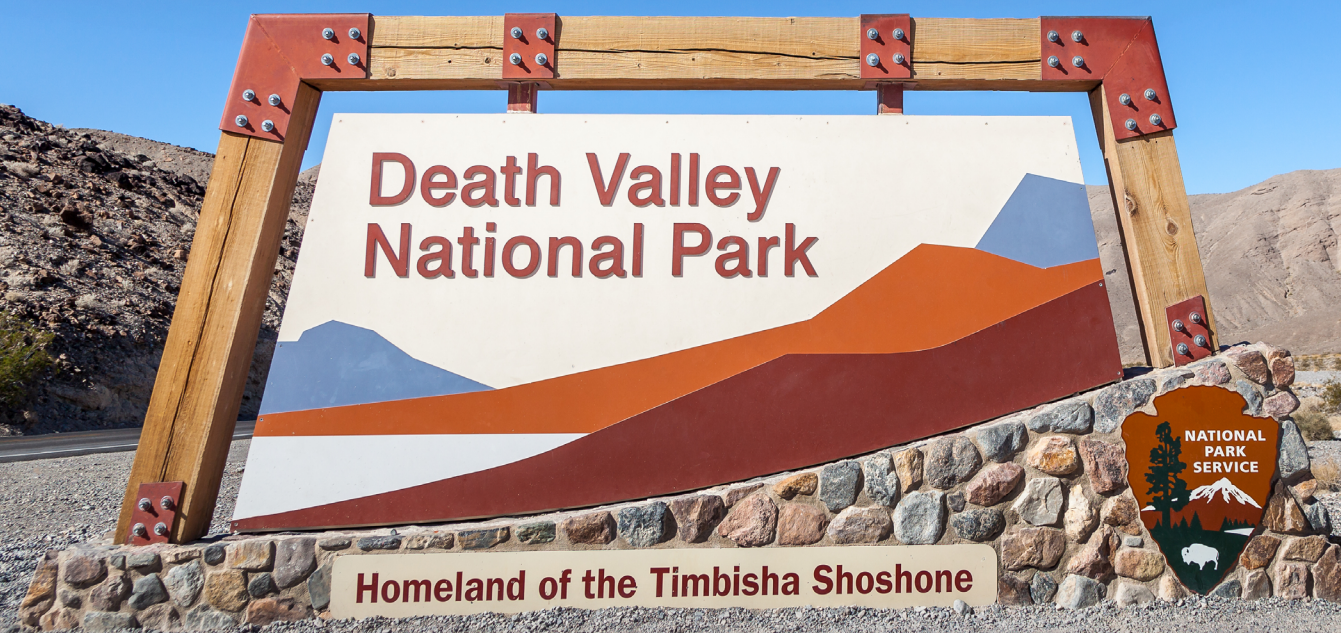
ONE-DAY ITINERARY:

- Begin your day by arriving early at the entrance of your choice. Make sure to download the Action Tour Guide app and activate the Death Valley tour before leaving your accommodation.
- Drive along the park's main roads and make stops at the Must-See attractions highlighted on the tour:
 - Zabriskie Point
 - Artist's Palette
 - Mosaic Canyon
 - Golden Canyon and Cathedral Trail
 - Natural Bridge Trail
 - Ibex Dunes
 - Dante's View
 - Devil's Golf Course
 - Mesquite Flat Sand Dunes
- Take a break for lunch at one of the designated picnic areas within the park, such as Furnace Creek or Harmony Borax Works.
- Embark on a few good and memorable hikes. (See Hikes Section)
- As the day draws to a close, head to one of the scenic overlooks, such as Dante's View or Zabriskie Point, to witness the mesmerizing sunset over the vast desert landscape.

TWO-DAY ITINERARY: Titus Canyon Bonus Tour

- **Day 1:** Follow the one-day itinerary mentioned above, starting from your selected entrance. Ensure you have the Action Tour Guide app and tour set up before entering the park.
- **Day 1 Night:** Return to the park at night for stargazing. Death Valley National Park offers exceptional opportunities for stargazing due to its dark skies. Find a clear spot away from light pollution and marvel at the celestial wonders above. Consider locations such as
 - Dante's View
 - Harmony Borax Works
 - Mesquite Flat Sand Dunes
- **Day 2:** Embark on the bonus tour of Titus Canyon (included with your main tour) for a thrilling drive through narrow canyons, towering cliffs, and ancient rock formations.
- Download the tour beforehand, as there is no signal within the park.
- After completing the Titus Canyon tour, take a break for lunch and relax before continuing your exploration of Death Valley.
- Depart the park by late afternoon to explore other nearby attractions or to begin your journey home, taking with you memories of your unforgettable adventure in Death Valley National Park.
- Additionally, Las Vegas serves as the starting point for various tours, such as the [Hoover Dam Tour](#), [Lake Mead Tour](#), and [Las Vegas City Tour](#). Explore numerous other tours available near Las Vegas at [ActionTourGuide.com](https://www.actiontourguide.com).

WHERE TO STAY



LAS VEGAS, NEVADA

As a vibrant city northeast of Death Valley, Las Vegas offers extensive lodging options and serves as a striking contrast to the desert's tranquility.

PAHRUMP, NEVADA

Near the Furnace Creek Entrance, Pahrump offers a range of lodging and dining options, ideal for visitors coming from the southeast.

RIDGECREST, CALIFORNIA

Southwest of the park near the Towne Pass Entrance, Ridgecrest offers diverse lodging options, suitable for those travelling from southern California.

BEATTY, NEVADA

Located just east of the park's Beatty Entrance, Beatty provides various accommodations, making it an ideal gateway to the eastern parts of the park.

LONE PINE, CALIFORNIA

Positioned near the Towne Pass Entrance on the west, Lone Pine offers several accommodations and easy access to the park's attractions.

PANAMINT SPRINGS, CALIFORNIA

Close to the Towne Pass Entrance, Panamint Springs provides accommodations near key sites like Darwin Falls and Father Crowley Vista Point.

KNOW BEFORE YOU GO



ENTRANCE FEES: Requires a park pass, which is not included in the self-guided tour. [Review pass options.](#)



RESERVATION: Requires a reservation for camping or other activities which is not included in the self-guided tour. [Reserve here before your trip.](#)



OPERATING HOURS: Open 24 Hours year-round. Be careful in summer due to extreme heat. [Learn more before you go.](#)



ROAD CLOSURES: Unexpected weather or construction incidents can affect roads. While the tour is updated frequently to include detours, it cannot reflect up-to-the-minute updates. [Check before you leave.](#)



PARK RULES AND SAFETY: Stay on designated trails, camp in designated areas, and respect wildlife and natural resources by following the [Camping Rules and Regulations](#). Follow all NPS [Laws and Policies](#). Be familiar with the park's [Safety Guidelines](#). During summer, minimize time outside in heat. It's recommended to not hike after 10 am. Drink plenty of water.

PACKING LIST



Binoculars



Water



First Aid Kit



Snacks



Portable Charger



Phone Holder



Gas



Sunscreen



Insect Repellent



Hiking Boots