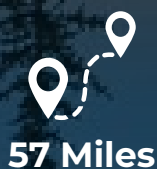




# GRAND TETON NATIONAL PARK

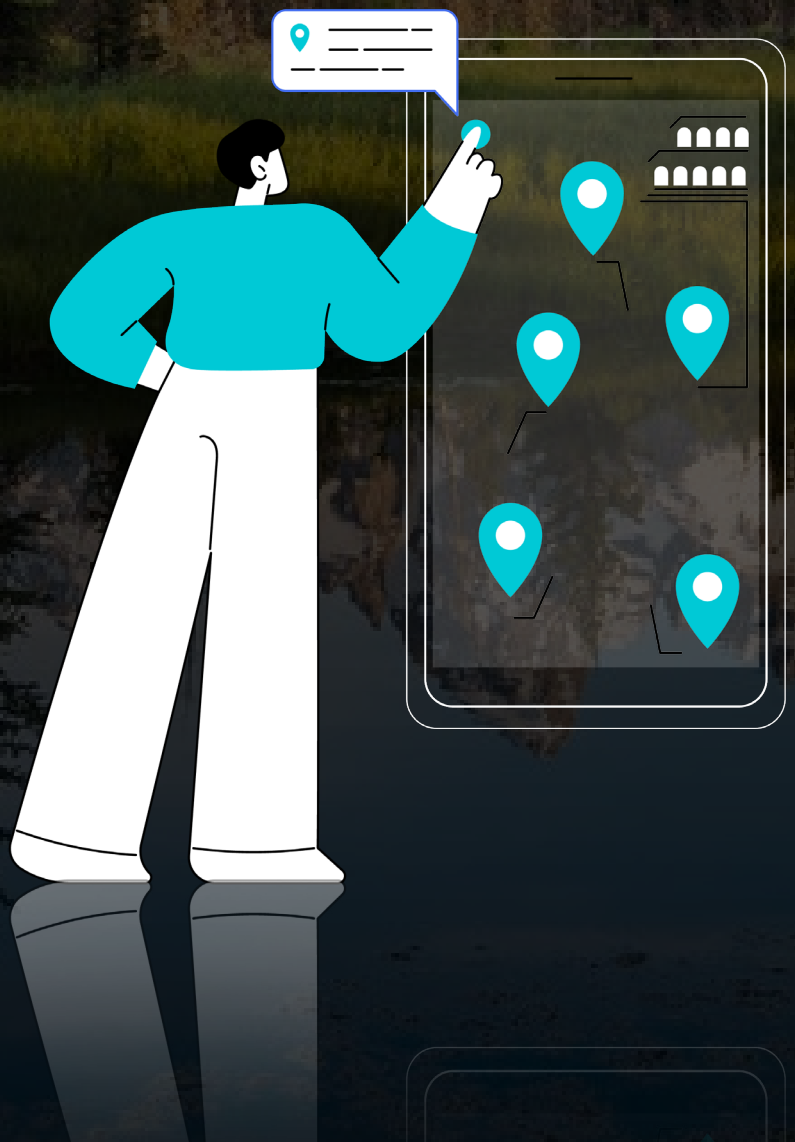
TRIP PLANNER



2-3 Hours

# TRIP PLANNER

- Where to Enter
- Must-See Points
- Best Hikes (Quick, Moderate, Long)
- Itineraries (One Day, Two Days)
- Where to Stay
- Know Before You Go
- Packing List



# WHERE TO ENTER

## GRAND TETON

START

### NATIONAL PARK SIGN

(MORAN - SOUTHBOUND )

START

### JACKSON HOLE VISITOR CENTER

(JACKSON - NORTHBOUND)

Your self-guided tour supports all two entrances! Each entrance is available as a separate tour version.

Don't worry — all the versions have all the same stories, just tailored to each entrance. One is not better than any other!

Be sure to have all of the versions downloaded ahead of time because there's no signal once in the park.

# MUST-SEE POINTS

**GRAND TETON  
NATIONAL PARK SIGN**  
(MORAN - SOUTHBOUND )

START

Jackson Lake  
Overlook

Jackson Lake  
Dam

Mountain  
View

Jenny Lake

Taggart Lake  
Trailhead

Chapel of the  
Transfiguration

Laurence S. Rockefeller  
Preserve



# BEST HIKES



LAKESHORE  
TRAIL



2.5 Miles



50 Mins



HIDDEN FALLS  
VIA JENNY LAKE



5 Miles



2 Hours



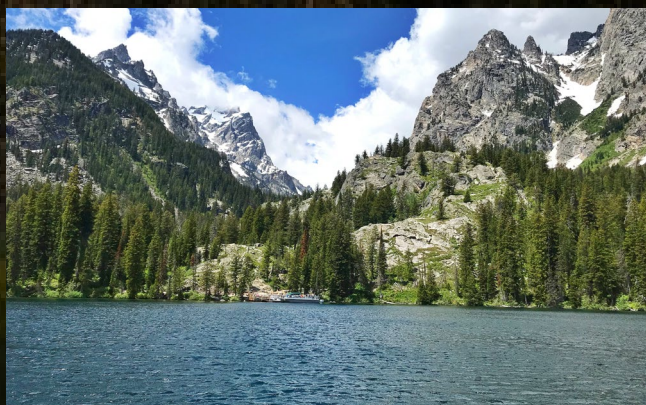
TAGGART LAKE  
TRAIL



6 Miles



1-2 Hours



JENNY LAKE  
TRAIL



7 Miles



2-3 Hours



CASCADE  
CANYON TRAIL



9.1 Miles



3-4 Hours



HERMITAGE  
POINT



9.7 Miles



3-4 Hours



# ITINERARIES

You can enjoy the park at your own pace with the self-guided audio tour from Action Tour Guide.

This flexible tour can be completed in one day or spread over multiple days. Since it is valid for one year and offers unlimited usage, you don't have to worry about seeing everything in one visit.

## ONE-DAY ITINERARY:

- Start your day by entering the park early in the morning. Make sure the app and tour inside are downloaded before you leave your stay as there is no signal within the park.
- Drive along the Park and stop at the Must-See points. (marked in the tour as "Must-See"):
  - Teton Village
  - Laurence S. Rockefeller Preserve
  - Chapel of the Transfiguration
  - Taggart Lake Trail
  - Jenny Lake
  - Mountain View
  - Jackson Lake Dam
  - Willow Flats
  - Jackson Lake Overlook
- Plan a few hikes during the day, depending on your time and interest. (See Hikes section)
- Enjoy a picnic lunch at one of the designated picnic areas, such as near Jenny Lake or Colter Bay Village. It's a great spot to relax and take in the stunning surroundings.
- As you head towards the exit, plan to wrap up your day at a scenic spot like Jackson Lake Overlook or Potholes Turnout to catch the sunset over the mountains. The views during the golden hour are unforgettable.

## TWO-DAY ITINERARY:

- **Day 1:** Follow the one-day itinerary mentioned above. As mentioned there as well, please make sure you have the app and tour set up before you get to the entrance.
- **Day 1 Night:** Stay in the park after sunset to experience the night sky. Grand Teton National Park offers incredible stargazing opportunities, with minimal light pollution and expansive night skies.
  - Taggart Lake Trailhead
  - Mountain View
  - Jackson Lake Overlook
  - Jenny Lake
- **Day 2:** Make your way back into the park to set off on some of its beautiful hikes early in the morning to avoid crowds. (see Hikes section.)
- Drive along the Park and stop at the Must-See points. (marked in the tour as “Must-See”):
  - Oxbow Bend
  - Snake River Overlook
  - Teton Point Turnout
  - Glacier View Turnout
  - Sleeping Indian Overlook
- After exploring, enjoy a quick picnic lunch in the park and leave the park in the early afternoon and head towards Jackson or Teton Village.
- If you’re departing Grand Teton National Park through the North, make the most of your time in the area by heading to [Yellowstone National Park](#) and enhance your experience with our tour, offering guided insights and stories for the next leg of your journey.



# WHERE TO STAY



## JACKSON

A bustling town near the southern entrance of [Grand Teton National Park](#), Jackson offers a wide range of accommodations, dining options, art galleries, and outdoor adventure shops. It's the main hub for visitors exploring both the Tetons and nearby Yellowstone.

## MORAN

Located between Grand Teton and [Yellowstone National Park](#), this area offers comfortable cabins and a rustic lodge. It's an excellent base for exploring both parks and enjoying nearby activities like fishing, horseback riding, and hiking.

## WILSON

A quaint community west of Jackson, Wilson provides a quieter, more relaxed atmosphere with various lodging options. It's close to Teton Pass and offers easy access to the park while maintaining a more secluded vibe.

## COLTER BAY VILLAGE

Situated within Grand Teton National Park on Jackson Lake, Colter Bay Village offers a variety of accommodations, including cabins, tent cabins, and RV sites. It features amenities like a marina, general store, and several scenic hiking trails.



# KNOW BEFORE YOU GO



**ENTRANCE FEES:** Requires a park pass, which is not included in the self-guided tour. [Review pass options.](#)



**RESERVATION:** Reservations are required in most campgrounds, which is not included in the self-guided tour. [Reserve here before your trip.](#)



**OPERATING HOURS:** Open 24 Hours. Year-Round. Partial closures or limited accessibility in winter due to snow. [Learn more.](#)



**ROAD CLOSURES:** Unexpected weather or construction incidents can affect roads. While the tour is updated frequently to include detours, it cannot reflect up-to-the-minute updates. [Check before you leave.](#)



**PARK RULES AND SAFETY:** Stay on designated trails, camp in designated areas, and respect wildlife and natural resources by following the [Camping Rules and Regulations](#). Follow all NPS [Laws and Policies](#). Be familiar with the park's [Safety Guidelines](#).

# PACKING LIST



Binoculars



Extra Layers



First Aid Kit



Snacks



Portable Charger



Phone Holder



Gas



Bear Spray



Insect Repellent



Sunscreen



Water



Hiking Boots



Hat & Glasses



Beachwear