



# GREAT SMOKY MOUNTAINS

TRIP PLANNER



45+ Miles

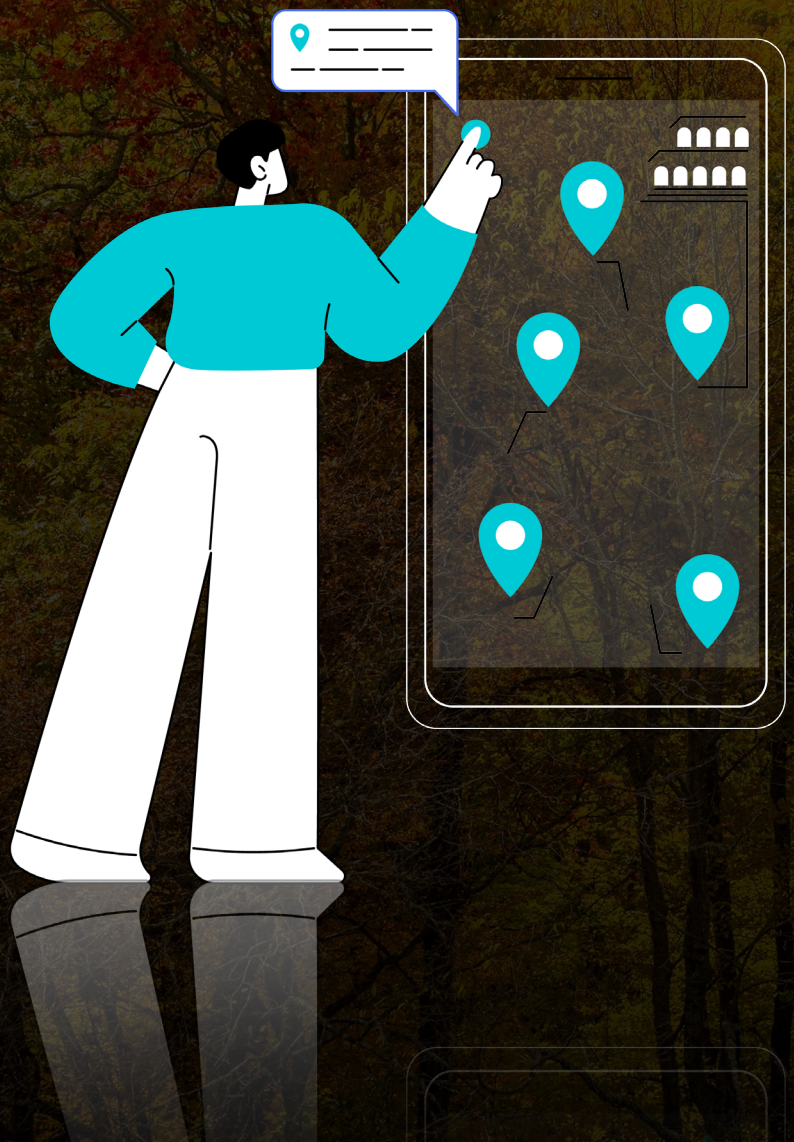


2-3 Hours



# TRIP PLANNER

- Where to Enter
- Must-See Points
- Best Hikes (Quick, Moderate, Long)
- Itineraries (One Day, Two Days)
- Where to Stay
- Know Before You Go
- Packing List





# WHERE TO ENTER

## GATLINBURG ENTRANCE (SOUTHBOUND)

START

START

## CHEROKEE ENTRANCE (NORTHBOUND-OCONALUFTEE VISITOR CENTER)

Your self-guided tour supports both the entrances!

Don't worry — Both the versions have the same stories, just tailored to each entrance. One is not better than the other!

Be sure to have the latest tour version downloaded ahead of time because there's no signal once in the park



# MUST-SEE POINTS

## GATLINBURG ENTRANCE (SOUTHBOUND)





# BEST HIKES



CLINGMANS  
DOME  
(Dedicated Tour)



Moderate



1.3 Miles



45 Mins



CATARACT  
FALLS



Easy



1 Miles



30 Mins



TRILLIUM GAP  
TRAIL



Moderate



2.6 Miles



1-2 Hours



BASKINS  
CREEK TRAIL



Hard



3.7 Miles



2-3 Hours



ALUM CAVE  
TRAIL



Moderate



11 Miles



7-8 Hours



RAINBOW FALLS  
TRAIL



Moderate



5.4 Miles



3-4 Hours



# ITINERARIES

You can enjoy the park at your own pace with the self-guided audio tour from Action Tour Guide.

This flexible tour can be completed in one day or spread over multiple days. Since it is valid for one year and offers unlimited usage, you don't have to worry about seeing everything in one visit.

## ONE-DAY ITINERARY:

- Start your day by entering the Park early in the morning. Ensure you have downloaded the Action Tour Guide app and the tours before leaving your accommodation, as there may be no signal within the park.
- Drive along the Newfound Gap Rd and stop at the Must-See points highlighted on the tour (marked as "Must-See"):
  - Cataract Falls
  - Carlos Campbell Overlook
  - Chimney Tops Overlook
  - Alum Cave Trail
  - Ben Morton Overlook
  - Newfound Gap
  - Clingmans Dome
  - Charles A Webb Overlook
  - Kanati Fork Trail
  - Mingus Mill
- Plan for a few hikes (See Hikes Section) and make the most of your visit with our dedicated tour of [Clingmans Dome](#), designed for a full, immersive experience.
- Enjoy a picnic lunch at one of the designated areas within the park, such as Chimney Tops Picnic Area.
- As the day winds down, take in the beauty of the park during the golden hour at a peaceful overlook like Ben Morton Overlook or Newfound Gap.



## TWO-DAY ITINERARY:

- **Day 1:** Follow the one-day itinerary mentioned above. Make sure to download the Action Tour Guide app and tour beforehand, as there may be limited signal within the park.
- **Day 1 Night:** End your day with stargazing. Set up your stargazing equipment or simply lay out a blanket and gaze at the stars, identifying constellations and marvelling at the Milky Way at one of the recommended spots, such as:
  - Ben Morton Overlook
  - Clingmans Dome
  - Newfound Gap
- **Day 2:** Embark on the bonus tour of Roaring Fork Motor Trail (included with your main tour) for a scenic drive through lush forests, cascading waterfalls, and historic log cabins. Just be sure to download the tour beforehand, as there is limited signal within the park.
- Stop at the Must-See points highlighted in the tour as “Must-see”:
  - Rainbow Falls Trail
  - Baskins Creek Falls
  - Grotto Falls
  - Ephraim Bales Cabin
  - The Place of a Thousand Drips
- Embark on a few hikes as per your difficulty level and interest. (See Hikes Section).
- Depart the park by late afternoon to visit other nearby attractions or begin your journey home, taking with you memories of your unforgettable adventure in the smokies.
- Additionally, the region offers various tours, such as [Cades Cove](#) and [Blue Ridge Parkway](#). Discover even more nearby tours at [ActionTourGuide.com](https://www.actiontourguide.com)



# WHERE TO STAY



## GATLINBURG, TN

Located at the park's popular northern entrance, Gatlinburg is a vibrant town with a wide range of accommodations, dining options, and visitor amenities. It's ideal for exploring the park's main attractions and enjoying the bustling town atmosphere.

## CHEROKEE, NC

Situated near the Oconaluftee Visitor Center at the park's southern entrance, Cherokee offers a quieter setting with various hotels, cabins, and cultural attractions. It's a perfect spot for exploring the southern section of the Smokies.



# KNOW BEFORE YOU GO



**ENTRANCE FEES:** There is no entrance fee, but all vehicles parked for more than 15 minutes require a parking tag. [Click here for more.](#)



**PERMITS AND RESERVATION:** Reservations are required for campgrounds and other activities, which is not included in the self-guided tour. [Reserve here before your trip.](#)



**OPERATING HOURS:** Open 24 Hours, Year-Round. In winter, parts of the park, including higher elevations and some roads, may close or have limited access due to snowfall. [Learn more before you go.](#)



**ROAD CLOSURES:** Unexpected weather or construction incidents can impact roads, and while the tour is frequently updated with detours, it may not reflect real-time changes. US 441/Newfound Gap Road and Kuwohi Road may be closed due to hazardous winter conditions—plan your trip accordingly and [check for updates before you leave.](#)



**PARK RULES AND SAFETY:** Stay on designated trails, camp in designated areas, and respect wildlife and natural resources by following the [Camping Rules and Regulations](#). Follow all NPS [Laws and Policies](#). Be familiar with the park's [Safety Guidelines](#).



# PACKING LIST



Binoculars



Hat & Glasses



Water



Snacks



Portable Charger



Phone Holder



Gas



First Aid Kit



Bear Spray



Insect Repellent



Sunscreen



Extra Layers



Hiking Boots