



MOUNT LEMMON

TRIP PLANNER



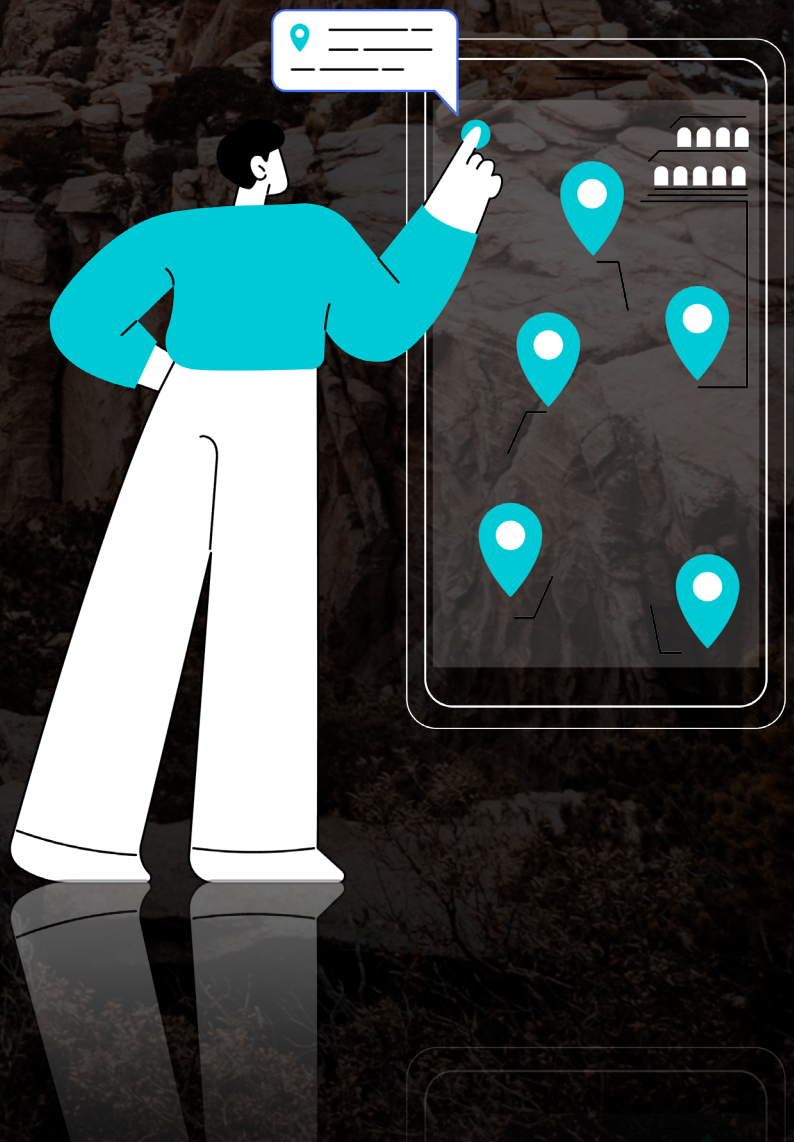
30+ Miles



2-3 Hours

TRIP PLANNER

- Must-See Points
- Best Hikes (Quick, Long)
- Itineraries (One Day, Two Days)
- Where to Stay
- Know Before You Go
- Packing List



MUST-SEE POINTS



BEST HIKES



ROSE CANYON
LAKE TRAIL



BABAD DO'AG
TRAIL



MOLINO BASIN
TRAIL



BUG SPRING
TRAIL



SOLDIER
TRAIL



BUTTERFLY
TRAIL



ITINERARIES

You can enjoy the park at your own pace with the self-guided audio tour from Action Tour Guide.

This flexible tour can be completed in one day or spread over multiple days. Since it is valid for one year and offers unlimited usage, you don't have to worry about seeing everything in one visit.

ONE-DAY ITINERARY:

- Start your day early to make the most of your time exploring Mount Lemmon. Make sure to download the Action Tour Guide app and tour beforehand, as there may be limited signal within the park.
- Stop at the Must-See points highlighted in the tour as “Must-see”:
 - Babad Do'ag Scenic Overlook and Trailhead
 - Molino Canyon Vista
 - Molino Basin Trail
 - Bug Spring Trail
 - Thimble Peak Vista
 - Manzanita Vista
 - Windy Point Vista
 - Hoodoo Vista
 - Rose Canyon Lake
 - Aspen Vista
 - Butterfly Trailhead
 - Mt. Lemmon SkyCenter Observatory
 - Mt Lemmon Ski Valley
- Experience some of the quick hikes or choose one of the moderate hikes available in the area, depending on your interests and fitness level (see Hikes section).
- Enjoy a packed lunch at one of the designated picnic areas or grab a meal at a local restaurant in Summerhaven.
- End your day by watching the sunset from a scenic viewpoint, such as Sunset Point Vista, to soak in the natural beauty of Mount Lemmon as the day comes to a close.

TWO-DAY ITINERARY:

- **Day 1:** Start your day early by following the one-day itinerary mentioned above. Explore the must-see points, enjoy quick hikes or moderate trails, and soak in the beauty of Mount Lemmon.
- **Day 1 Night:** Enjoy a memorable stargazing experience right from the mountain at one of the recommended spots:
 - Windy Point Vista
 - Sunset Point Vista
 - Summerhaven
- **Day 2:** Return to the mountain for another day of adventure. Choose a few hikes. (See hikes section).
- Make sure to start your hikes early in the day to avoid crowds and allow enough time to complete them. Pack plenty of water, snacks, and necessary gear for your chosen hikes.
- Before you depart, take some time to explore the town and nearby cities. Treat yourself to a snack, meal, or ice cream as you reflect on your memorable adventure on Mount Lemmon.
- While you're on your Mount Lemmon adventure, don't miss out on exploring nearby [Saguaro National Park](#)! Experience the stunning desert landscapes and iconic saguaro cacti with our self-guided tour. For more such tours visit [ActionTourGuide.com](#).

WHERE TO STAY



TUCSON

Located at the base of Mount Lemmon, Tucson offers a wide range of lodging options, including hotels, resorts, and vacation rentals. Visitors can explore attractions in Tucson before embarking on their journey up Mount Lemmon.

ORO VALLEYE

Located northwest of Mount Lemmon, Oro Valley offers accommodations and serves as a gateway to outdoor recreational activities in the area. Visitors can explore hiking trails, golf courses, and shopping destinations.

KNOW BEFORE YOU GO



ENTRANCE FEES: Requires a park pass, which is not included in the self-guided tour. [Review pass options.](#)



RESERVATION: Required for some activities, which is not included in the self-guided tour. [Reserve here before your trip.](#)



OPERATING HOURS: Open 24 Hours. Year-Round. Partial closures and access to roads beyond Mt Lemmon Ski Valley is closed in the winter due to snow or other factors. [Learn more before you go.](#)



ROAD CLOSURES: Unexpected weather or construction incidents can affect roads. While the tour is updated frequently to include detours, it cannot reflect up-to-the-minute updates. The public can call the road closure hotline at (520) 547-7510 for road status and condition updates. [Check before you leave.](#)



PARK RULES AND SAFETY: Stay on designated trails, camp in designated areas, and respect wildlife and natural resources by following the [Camping Rules and Regulations](#). Follow all NPS [Laws and Policies](#). Be familiar with the park's [Safety Guidelines](#).

PACKING LIST



Binoculars



Water



First Aid Kit



Snacks



Portable Charger



Gas



Bear Spray



Insect Repellent



Sunscreen



Flashlight



Hiking Boots



Extra Layers