



SEQUOIA AND KINGS CANYON

TRIP PLANNER



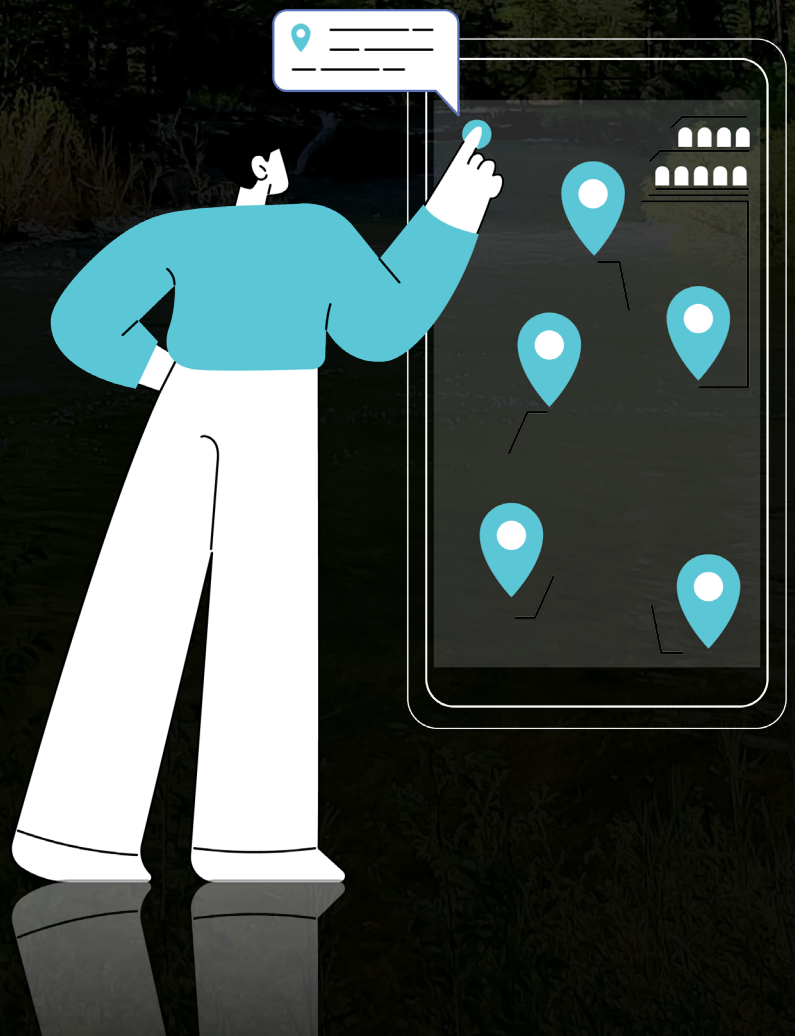
100+ Miles



2-3 Hours

TRIP PLANNER

- Where to Enter
- Must-See Points
- Best Hikes (Quick, Moderate, Long)
- Itineraries (One Day, Two Days)
- Where to Stay
- Know Before You Go
- Packing List



WHERE TO ENTER



START

The Big Stump Grove
Big Stump Entrance

START

Foothills Visitor Center

Ash Mountain Entrance

Your self-guided tour supports both the entrances!

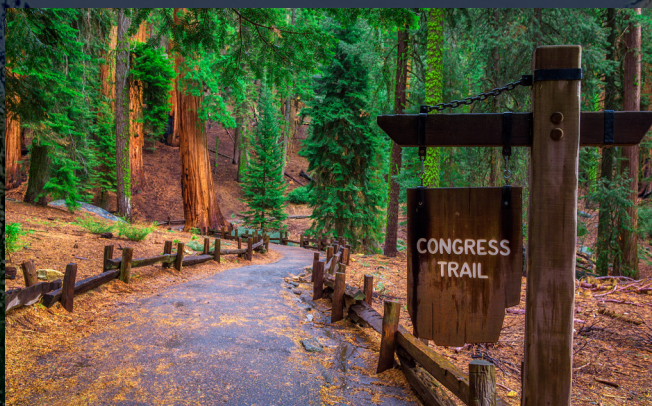
Don't worry — Both the versions have the same stories, just tailored to each entrance. One is not better than any other!

Be sure to have the latest tour version downloaded ahead of time because there's no signal once in the park.

MUST-SEE ATTRACTIONS



BEST HIKES



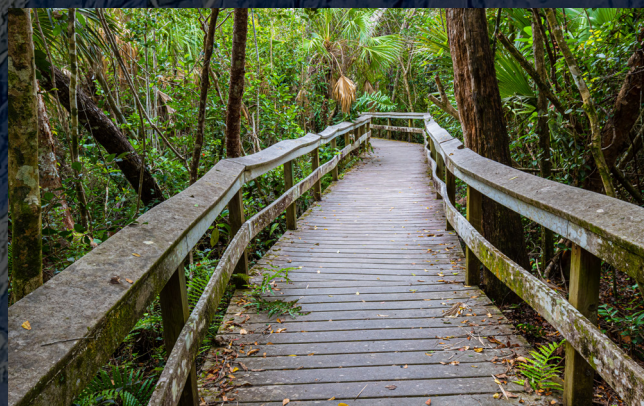
CONGRESS
TRAIL



2.9 Miles



1.5 Hours



BIG BALDY
RIDGE TRAIL



4.8 Miles



3-4 Hour



CRYSTAL CAVE



0.8 Miles



2 Hours



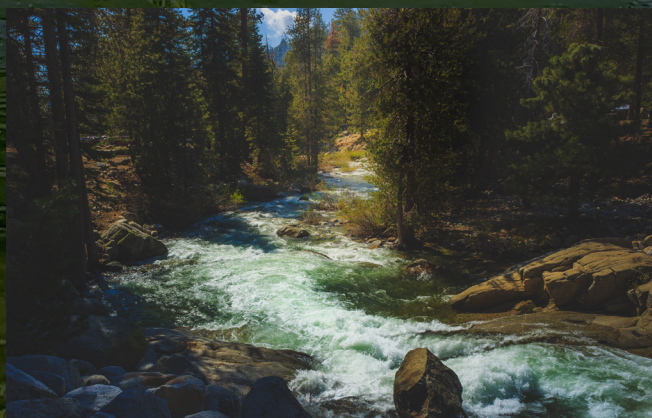
LITTLE BALDY
TRAIL



3.3 Miles



3-4 Hours



MARBLE FALLS
TRAIL



6.3 Miles



2.5 Hours



BEAR HILL TRAIL



2 Miles



1 Hour

ITINERARIES

You can enjoy the park at your own pace with the self-guided audio tour from Action Tour Guide.

This flexible tour can be completed in one day or spread over multiple days. Since it is valid for one year and offers unlimited usage, you don't have to worry about seeing everything in one visit.

ONE DAY ITINERARY

- Start your day by entering Sequoia National Park early in the morning. Ensure you have downloaded the Action Tour Guide app and the tour before leaving your accommodation, as there may be limited signal within the park.
- Drive along the Generals Highway and stop at the Must-See points highlighted on the tour (marked as “Must-See”):
 - Marble Falls
 - Tunnel Rock
 - Parker Group Sequoias
 - Hanging Rock
 - General Sherman Tree
 - Moro Rock
 - Tunnel Log
 - Crystal Cave
- Enjoy a picnic lunch at one of the designated picnic areas within the park, such as Hospital Rock Picnic Area.
- Plan for a few hikes (refer to the Hikes section).
- As the day winds down, savor the beauty of the park during the golden hour. Find a peaceful spot to enjoy the sunset, such as Grant Grove or Panoramic Point, for breathtaking views of the landscape in warm, golden light.

TWO DAY ITINERARY

- **Day 1 :** Follow the one-day itinerary mentioned above. Make sure to download the Action Tour Guide app and tour beforehand, as there may be limited signal within the park.
- **Day 1 Night :** End your day with stargazing. Set up your stargazing equipment or simply lay out a blanket and gaze at the stars, identifying constellations and marvelling at the Milky Way at one of the recommended spots, such as:
 - Panoramic Point
 - Moro Rock
- Find a place to stay nearby and rest for the night, preparing for the exploration of Kings Canyon the next day.
- **Day 2:** Return to the park to explore Kings Canyon National Park. Stop at key highlights along the scenic drive, marked as “Must-See”, such as:
 - The Big Stump Grove
 - General Grant Tree
 - Kings Canyon Panoramic Point
 - Kings Canyon Overlook
 - Boyden Cavern
- Embark on a few medium hikes or one long hike (see Hikes section).
- Enjoy a picnic lunch at one of the designated picnic areas within the park, such as Stony Creek Picnic Area or Big Stump Picnic Area.
- After completing your hikes and tour, take some time to relax and reflect on your experiences in both parks before departing.

WHERE TO STAY



THREE RIVERS:

Located near the Ash Mountain Entrance to Sequoia National Park, Three Rivers offers a variety of accommodations and amenities. It's an excellent option for those who want easy access to the park's southern entrance and attractions like the Giant Forest.

YOKUTS VALLEY:

Located near the Big Stump Entrance to Kings Canyon National Park, Yokuts Valley offers a quiet, rural setting with basic amenities. It is a convenient option for visitors looking for easy access to the park's northern entrance and attractions like Grant Grove and the General Grant Tree.

KNOW BEFORE YOU GO



ENTRANCE FEES : Requires a park pass, which is not included in the self-guided tour. [Review pass options.](#)



Permits and Reservations : Reservations are required for most campgrounds and for Crystal Cave, but these are not included in the self-guided tour. [Reserve here before your trip.](#) Click [here](#) for other reservations



OPERATING HOURS : Open 24 Hours. Year-Round. In winter, parts of the park, including higher elevations and some roads, may close or have limited access due to snow and ice. [Learn more before you go.](#)



ROAD CLOSURES : Unexpected weather or construction incidents can affect roads. While the tour is updated frequently to include detours, it cannot reflect up-to-the-minute updates. [Check before you leave.](#)



PARK RULES AND SAFETY : Stay on designated trails, camp in designated areas, and respect wildlife and natural resources by following the [Camping Rules and Regulations](#). Follow all NPS [Laws and Policies](#). Be familiar with the park's [Safety Guidelines](#).

PACKING LIST



Phone Holder



Portable Charger



Snacks



Water



Gas



Hiking Boots



First Aid Kit



Bear Spray



Insect Repellent



Extra Layers



Sunscreen



Hat & Sunglasses