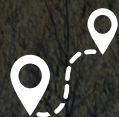




THEODORE ROOSEVELT NATIONAL PARK

TRIP PLANNER



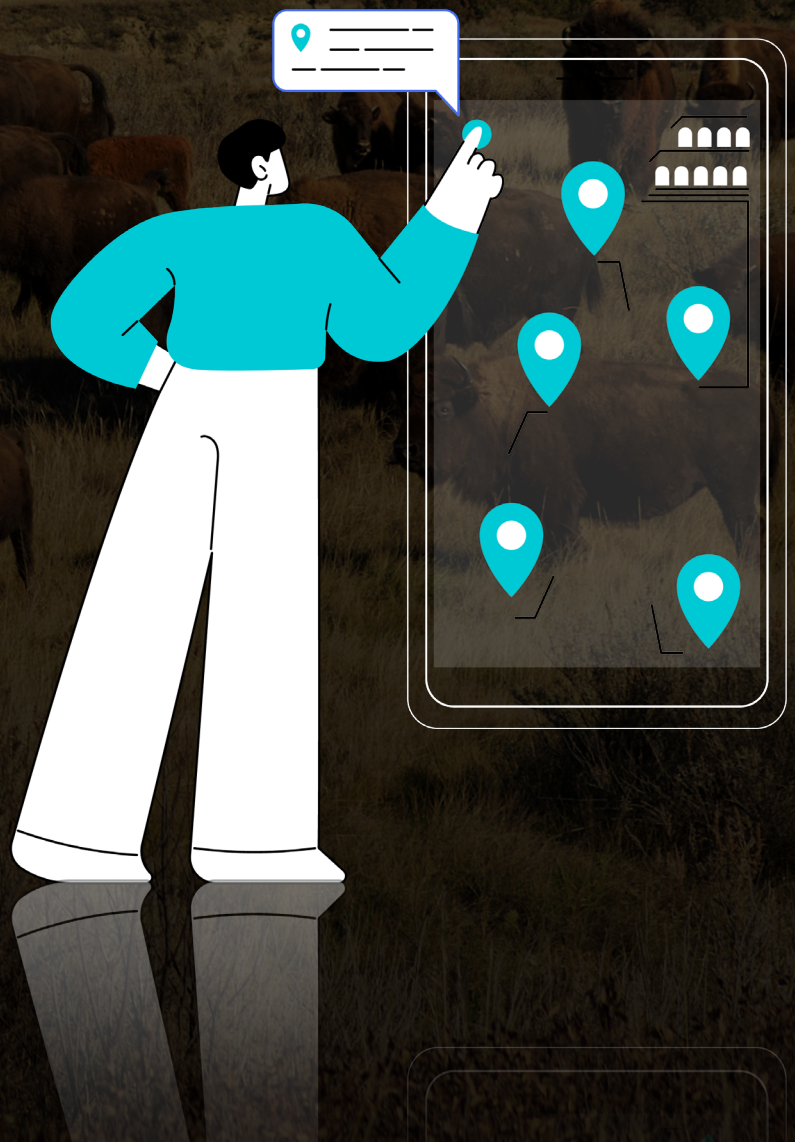
30+ Miles



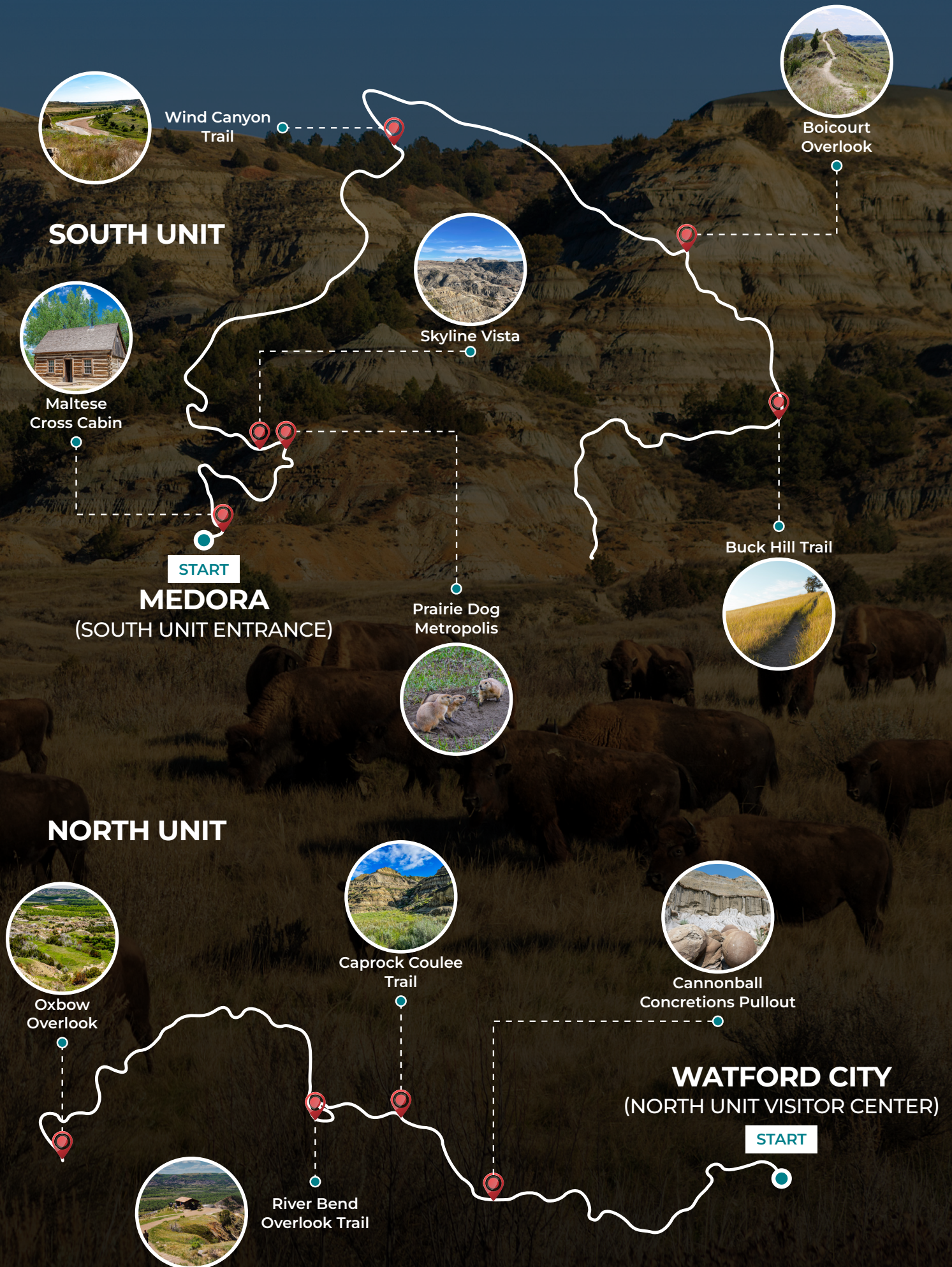
2-3 Hours

TRIP PLANNER

- Must-See Points
- Best Hikes (Quick, Moderate, Long)
- Itineraries (One Day, Two Days)
- Where to Stay
- Know Before You Go
- Packing List



MUST-SEE POINTS



BEST HIKES



WIND CANYON
TRAIL



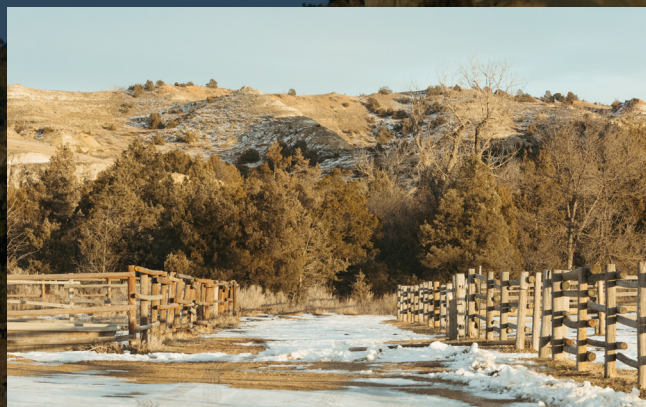
Easy



0.5 Miles



15 Mins



COAL VEIN
NATURE TRAIL



Easy



0.6 Miles



15 Mins



PAINTED CANYON
NATURE TRAIL



Moderate



1.1 Miles



45 Mins



SPERATI
POINT



Moderate



2.4 Miles



1 Hour



CAPROCK
COULEE



Moderate



4.4 Miles



2 Hours



EKBLOM
TRAIL



Moderate



5.3 Miles



2-3 Hours

ITINERARIES

You can enjoy the park at your own pace with the self-guided audio tour from Action Tour Guide.

This flexible tour can be completed in one day or spread over multiple days. Since it is valid for one year and offers unlimited usage, you don't have to worry about seeing everything in one visit.

ONE-DAY ITINERARY:

- Start your day early by entering the park through the South Unit entrance. Download the Action Tour Guide app and tour beforehand, since there is little to no signal within the park.
- Stop at the Must-See points highlighted on the tour (marked in the tour as "Must-See"):
 - Maltese Cross Cabin
 - Prairie Dog Metropolis
 - Skyline Vista
 - Wind Canyon Trail
 - Boicourt Overlook
 - Buck Hill Trail
- Explore the park's attractions or embark on one of the hikes recommended earlier. (See hikes section)
- Enjoy a packed lunch at one of the designated picnic areas within the park, such as the Skyline Vista or near the Boicourt Overlook, where you can take in breathtaking views while you relax and refuel for the rest of your adventure.
- End your day by watching the sunset from a scenic viewpoint. Consider locations like the Boicourt Overlook to witness the golden light painting the landscape as the day comes to a close.

TWO-DAY ITINERARY:

- **Day 1:** Follow the one-day itinerary mentioned above. As mentioned there as well, please make sure you have the app and tour set up before you get to the entrance.
- **Day 1 Night:** As night falls, stay in the park for stargazing in areas with low light pollution. Recommended spots include:
 - Skyline Vista
 - Buck Hill Trail
 - Boicourt Overlook
- **Day 2:** Set off on the tour of Theodore Roosevelt National Park's North Unit for an exciting adventure through its rugged badlands, scenic overlooks, and fascinating history.
- Drive along the North Unit Scenic Road, stopping at highlights like:
 - Cannonball Concretions Pullout
 - Caprock Coulee Trail
 - River Bend Overlook
 - Oxbow Overlook
- Go on some of the North Unit park's beautiful hikes (see Hikes section).
- After exploring the North Unit tour, take a break for lunch and relax at the oxbow overlook or the Cannonball Concretions Pull Out before continuing.
- Depart the park by late afternoon, cherishing the memories of your unforgettable adventure in Theodore Roosevelt National Park.

WHERE TO STAY



MEDORA

Positioned near the South Unit entrance, Medora is a charming town known for its western atmosphere, historic sites, and outdoor recreational opportunities.

BELFIELD

Situated near the South Unit entrance, Belfield provides lodging options for travellers visiting Theodore Roosevelt National Park.

WATFORD CITY

Located near the entrance to the park's North Unit, Watford City offers a welcoming base for visitors. It features a variety of lodging, dining options, and local attractions, making it an excellent starting point for your park adventure.

KILLDEER

About an hour from the North Unit of Theodore Roosevelt National Park, Killdeer offers a quiet base for exploring the park and nearby Badlands. With access to the Killdeer Mountain Four Bears Scenic Byway, it provides a peaceful stay with limited lodging and dining options.

KNOW BEFORE YOU GO



ENTRANCE FEES: Requires a park pass, which is not included in the self-guided tour. [Review pass options.](#)



RESERVATION: Required only for Camping, which is not included in the self-guided tour. [Reserve here before your trip.](#)



OPERATING HOURS: Open 24 Hours Year-Round. Please note that the North Unit operates on Central time, while the South Unit operates on Mountain time. Partial closures or limited accessibility in winter due to snow. [Learn more before you go.](#)



ROAD CLOSURES: The section between Old East Entrance Station and mile marker 28 is closed to all access, including vehicles, pedestrians, and bicycles. Unexpected weather or construction incidents can also affect roads. While the tour is updated frequently to include detours, it cannot reflect up-to-the-minute updates. [Check before you leave.](#)



PARK RULES AND SAFETY: Stay on designated trails, camp in designated areas, and respect wildlife and natural resources by following the [Camping Rules and Regulations](#). Follow all NPS [Laws and Policies](#). Be familiar with the park's [Safety Guidelines](#).

PACKING LIST



Binoculars



Water



First Aid Kit



Portable Charger



Extra Layers



Snacks



Sunscreen



Hiking Boots