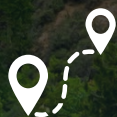




ZION NATIONAL PARK

TRIP PLANNER



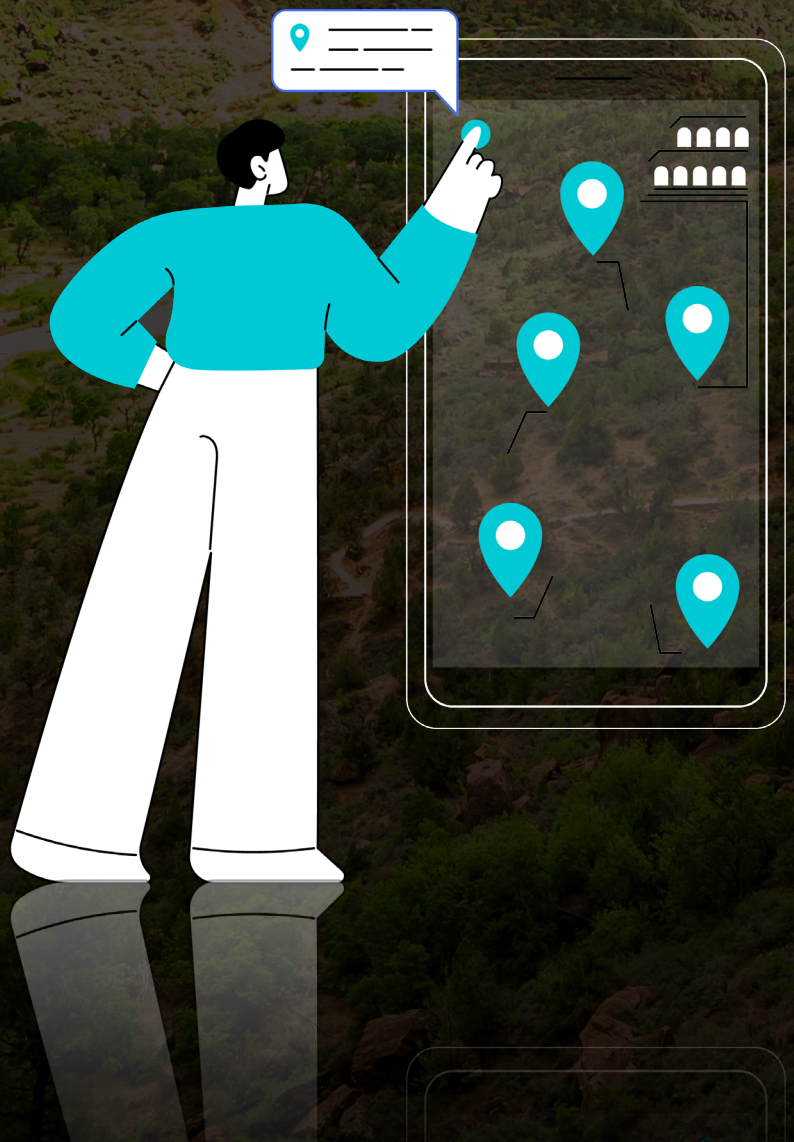
25 Miles



1-2 Hours

TRIP PLANNER

- Where to Enter
- Must-See Points
- Best Hikes (Quick, Moderate, Long)
- Itineraries (One Day)
- Where to Stay
- Know Before You Go
- Packing List



WHERE TO ENTER



Your self-guided tour supports both the entrances! Both entrances are available as separate tour versions.

Don't worry — Both versions have all the same stories, just tailored to each entrance. One is not better than the other!

Be sure to have both of the versions downloaded ahead of time because there's no signal once in the park.

MUST-SEE POINTS



BEST HIKES



CANYON
OVERLOOK TRAIL



0.8 Miles 30 Mins



PA'RUS TRAIL



3.7 Miles 1-2 Hours



GROTTO TRAIL



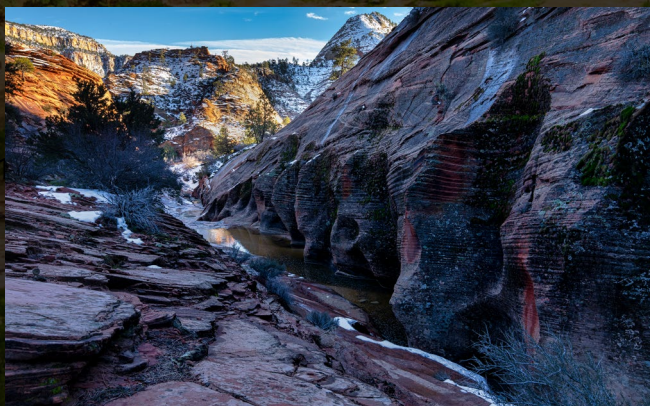
1.2 Miles 30 Mins



EMERALD
POOLS TRAIL



3 Miles 1-2 Hours



KEYHOLE
CANYON TRAIL



0.6 Miles 1-2 Hours



ANGELS
LANDING TRAIL



4.2 Miles 2-4 Hours

ITINERARIES

You can enjoy the park at your own pace with the self-guided audio tour from Action Tour Guide.

This flexible tour can be completed in one day. Since it is valid for one year and offers unlimited usage, you don't have to worry about seeing everything in one visit.

ONE-DAY ITINERARY:

- Start your day early to beat the crowds and make the most of your time in Zion National Park. Before leaving your stay, ensure the app and tour are downloaded, as cell signals can be spotty inside the park.
- The orange line on the trip planner map marks the shuttle-only section of Zion Canyon Scenic Drive. From March to late November, visitors must use Zion's free shuttle service to access this area, helping reduce traffic and protect the park. Check the [shuttle schedule](#) in advance.
- Explore the park and stop at the Must-See points. (marked in the tour as "Must-See"):
 - Zion Human History Museum
 - Altar of Sacrifice, Sundial, & West Temple
 - Canyon Junction Bridge
 - Court of the Patriarchs Vista Point
 - Emerald Pools
 - Angles Landing Trail
 - The Grotto Picnic Area
 - Temple of Sinawava
 - Zion Scenic Viewpoint 2
 - Canyon Overlook Trail
 - Keyhole Canyon
 - Checkerboard Mesa
- Enjoy a picnic at The Grotto or near the Zion Human History Museum, and plan a hike based on your time and interest. (See Hikes section)
- Wrap up your day with a stunning sunset at Canyon Junction or Checkerboard Mesa before heading to the exit.
- If you're staying longer in Utah, explore nearby national parks such as [Bryce Canyon](#), known for its towering hoodoos and dramatic overlooks. You can also check out our [Utah Bundle](#), featuring more national parks, scenic drives, and top walking tours to make the most of your journey. For more, visit [Actiontourguide.com!](#)

WHERE TO STAY



SPRINGDALE

Positioned at the southern edge of Zion National Park, Springdale is the most popular gateway town with numerous hotels, restaurants, and shops, offering easy access to the park's main entrance.

ORDERVILLE

A small town positioned along Highway 89, Orderville offers a quieter alternative for lodging and easy access to Zion's East Entrance.

ROCKVILLE

Just minutes from the entrance to Zion National Park, Rockville is a small, peaceful town offering a limited selection of quaint bed-and-breakfasts and vacation rentals. It provides a quiet, close-to-nature setting, ideal for visitors.

KANAB

Located further south along Highway 89, Kanab is a larger town with many accommodation options, making it a popular base for exploring both Zion's East Entrance and nearby attractions.

KNOW BEFORE YOU GO



ENTRANCE FEES: Requires a park pass, which is not included in the self-guided tour. [Review pass options.](#)



RESERVATION: Reservations are required in most campgrounds, which is not included in the self-guided tour. [Reserve here before your trip.](#)



OPERATING HOURS: Open 24 Hours, Year-Round. Partial closures or limited accessibility in winter due to snow. [Learn more.](#)



SHUTTLES: Zion National Park operates a free shuttle service to reduce traffic congestion and protect the park's natural beauty. The shuttle runs in two primary areas: Springdale and Zion Canyon Scenic Drive. It's mandatory for visitors to use the shuttle system to access the Zion Canyon Scenic Drive from March through late November. [Check out the shuttle schedule here.](#)



ROAD CLOSURES: Unexpected weather or construction incidents can affect roads. While the tour is updated frequently to include detours, it cannot reflect up-to-the-minute updates. [Check before you leave.](#)



PARK RULES AND SAFETY: Stay on designated trails, camp in designated areas, and respect wildlife and natural resources by following the [Camping Rules and Regulations](#). Follow all NPS [Laws and Policies](#). Be familiar with the park's [Safety Guidelines](#).

PACKING LIST



Binoculars



Extra Layers



First Aid Kit



Snacks



Portable Charger



Phone Holder



Gas



Bear Spray



Inscet Repellent



Water



Hiking Boots